

# Buena Vista Park Villas Case Study

The Buena Vista development is a luxury collection of executive town houses and detached villas with gardens, solarium's and swimming pools.

Located in Gibraltar on the historic site of the Buena Vista Battery this unique development has continental views across to Africa and Europe.

Ayrshire Metals worked closely with the Engineers and Construction firm to provide Light Gauge Steel Framing as the primary structure, reducing the need for deep foundations and increasing the speed of construction.

The light weight frames are structurally efficient providing a cost effective system.

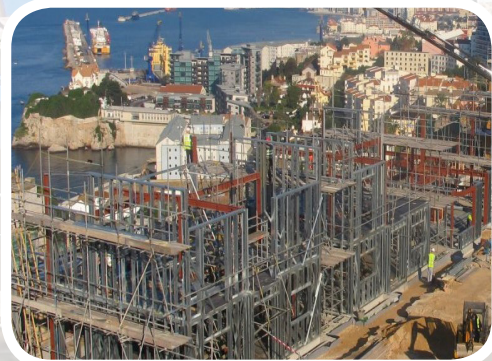
The versatility of the system allowed the designers to customise the buildings to suit specific home owners choices.





# Ayrshire Steel Framing

**Ayrshire Steel Framing** is a rapid, versatile steel framing system, which is fixed as a rapid dry infill between the main structural frame members. The system acts as a carrier for external cladding, internal wall make-up and insulation. ASF is designed to suit the loading, deflection and dimension requirements of each project. The cold rolled galvanised framing consists of steel studs, head and base tracks and opening trimmers forming a lightweight, made to measure framing system so generating no waste. Projects requiring fast construction and/or a lightweight solution will benefit from the rapid, in-situ nature of the installation.



## Ayrshire Metals

offers its clients, or their professional advisors, a fully featured software package to gain the optimum design solution called AyrSuite™ when utilising Ayrshire Products.



The software is developed in-house and accurately identifies the most cost effective solutions for specific load bearing stud wall, floor or roof areas.



To learn more about:-  
**Ayrshire Steel Framing**

& to obtain a **FREE** copy of our software **AyrSuite™**

Please contact our experienced sales team who will be happy to assist.

## Benefits of Ayrshire Steel Framing

- *Cost Effective*
- *Quick Turnaround*
- *Lightweight and Structurally Efficient*
- *No Waste*
- *Easy to Install*
- *Compatible with most types of cladding*

